

# BURY Smart

Voice-controlled  
*Bluetooth*® hands-free car kit  
with touch screen



**DialogPlus voice control** – fast and accurate word recognition; no voice training required; visual and audio prompts



**Multipoint-function** – simultaneous connection of two mobile phones to the system is possible



**Magic word** – activation of the voice control with a single voice command



**Voice memo function** – record telephone calls and leave behind instructions for other drivers



**Text-to-speech**<sup>1</sup> – reads out text messages and phone book entries aloud

<sup>1</sup>The scope of the functions may vary according to mobile phone, network provider and software version

It speaks for itself

# BURY Smart

in detail

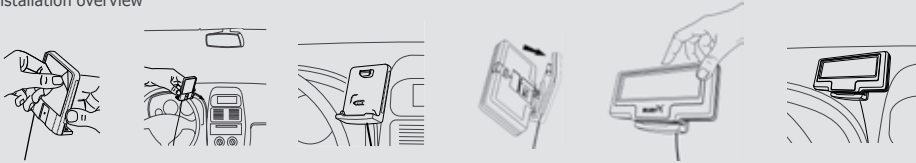
- **Touch screen** – easy-to-use system with intuitive multifunction display
- **Voice dialling**
- **Crystal-clear voice reproduction** via vehicle's built-in sound system; automatic radio muting when calling
- The separate **level-adjustment of the microphone and loudspeaker** is possible via the HFCK menu
- **MP3 playback** from mobile phone via the car hi-fi system<sup>1,2</sup>
- **Display shows contacts, call log and caller data<sup>1</sup>**
- **Stores multiple numbers** for one contact
- **Maximum capacity: 10 handsets, 1000 text messages, 150 voice tags, 15.000 contacts** (up to 1.500 contacts per phone)

<sup>1</sup>The scope of the functions may vary according to mobile phone, network provider and software version

<sup>2</sup>AUX cable or CAR MP3/CD Adapter needed (accessory)



## Installation overview



## Technical details

Multifunction display	128 x 32 pixels, touch screen, 6 colours
External dimensions electronic box	153 x 58 x 22 mm
Operating voltage	10 V - 16 V
Bluetooth® profiles	Handsfree, Headset, FTP, GAP, GOEP, OPP, PBAP, SPP, IrMC, A2DP

## Accreditations



Hands-free car kit BURY Smart meets the requirements of the EU-Directive 1999/5/EC (R&TTE Directive)



Technical type approval according to 72/245/EEC (2006/28/EC) "Electromagnetic Compatibility in motor vehicles"

Display colour scheme can be matched to the car interior. For example:  
Day colour schemes      Night colour schemes



## Scope of delivery



1. Multifunction display
2. Mounting
3. Electronic box
4. External microphone
5. ISO loudspeaker switch box AC 5120
6. Instruction manual on CD

Subject to alterations and errors excepted. All of the brands and/or brand names stated here are owned by the corresponding legal rights owners. 50-02-0439-3 2010-06-14